

Extremely Flexible
 Stylish
 Black or White

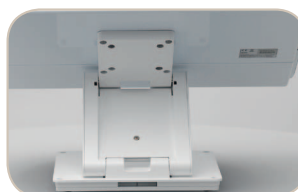
The 4POS FlexSTAND fits almost all integrated POS Systems touchscreens and flat screens up to 22". As its name indicates, it can be very flexibly adjusted. Two hinges ensure that it can be adjusted to the perfect angle and proper height for everyone. Ergonomics in pure form. 4POS design and quality for retail and hospitality – a perfect solution when combined with 4POS systems and displays.



FlexSTAND



1. VESA mount solution, fits almost all flat systems



2. Flexible adjustment

Model Name	FlexSTAND
Material	Die-cast aluminium
Features	VESA 75 / 100 Height Adjustment, from 180 to 352 mm
Tilt Angle (Degree)	~ -90° to 90°
Options	Heavy steel plate for optimal standing
Environment	CE
Dimensions (W x D x H)	260 x 225 x 60 mm (fully retracted)
Weight	1.7 kg
Colour	Black or White

Notes: Specifications are subject to change without notice. Product photos and pictures are for illustration purposes only and may differ from the real product's appearance.

V1412

